



# Lowther School Family Newsletter

Issue 22

13th June 2012

www.lowther.richmond.sch.uk

## Welcome Back!

It's the final half term of the school year— already! I can quite believe it. During the course of the year I hope you have noticed the academic and social growth of your child. It is one of the great privileges of being a teacher—seeing children learn new and exciting things, I hope this last half term is packed full of exciting discovery and learning.

## Thank you for Grounds Afternoon

I thought Grounds afternoon was wonderful. It was fantastic to see such a wide variety of performances from the children. Your support of the children and the school is really appreciated. The children love showing you what they've been up to. Look out for an online gallery of snaps soon.

The last half term of school is always busy so we thought it would be useful for you to have a summary of the calendar of Key Events for the final half term of 2011-2012



## JUNE

- 20th New Parents Meeting
- 21st Inset Day School Closed
- 22nd Inset Day School Closed
- 26th Yr 4 Hampton Court
- 28th Yr 3 British Museum
- 29th Nursery Sports Day  
Parents Quiz Night  
7.30—11.00 pm

## JULY

- 2nd Yr 5 Science Museum
- 3rd AM Nursery Bunny Pk
- 4th KSI Teddy Bears' Picnic  
Yr 6 Play 7.00 pm
- 6th Sports Day
- 8th Summer Fair
- 9th Yr 6 Isle of Wight Week  
PM Nursery Bunny Pk
- 11th Reception Parents  
Visiting Yr 1
- 12th Selling Produce in  
Waitrose
- 13th KSI to Brighton
- 14th Barnes Fair
- 18th Last day of Nursery term
- 19th Puppet Show KS1 & KS2  
New children visiting  
Nursery
- 20th END OF SUMMER TERM

## Homework Challenge 6 — Sports Day Event

As 2012 is Olympic year I thought that we really ought to have a sports based homework challenge.

### Mr.T's Challenge — DESIGN AN EVENT FOR THIS YEARS SPORTS DAY

Sports Day is on Friday 6th July this year. We usually have a series of team events in the morning and then running races in the afternoon. Your challenge is to **design a new event for the morning team events.**

The best design will actually be one of the events on Sports Day 2012. Wow! All entries will get a "Bling Bling" of course and I'll do special sporty certificates for all really excellent entries.

All you need to do is decide what you think would be a great event—and then show that either through a drawing, a model, perhaps you could make a short movie of you doing the event, perhaps write a set of instructions. It really is up to you—be creative but be practical and realistic too.

Entries need to be in by  
Friday 22nd June



## School Council News

The school council's new sports initiative for Thursday lunch-times has been a great success. So far we've done Dodgeball and dance. The dance really was a magic time—as it grew from a few children having a boogie to pretty much the whole school (including grown ups) getting down! I am so proud of the way your children always enter in to the spirit of things and get involved in Lowther life,



## CHANGE OF DATE

**Due to the dreadful weather the PTA have very sensibly decided to re-schedule the Summer Fair from Saturday 16th June to the NEW date of SUNDAY 8th JULY. We do hope you'll come and join in the fun.**

CHILDREN RETURN TO  
SCHOOL ON THURSDAY  
6TH SEPTEMBER

## QUIZ NIGHT

Buy your Quiz night tickets from the Welcome Lobby. Make up a team (max 4) and compete against the staff teams and make it a fun night!!!



### Work at home

Pictured above is another wonderful example of work done at home. The teachers and I love children bringing in their creations, sums, writing and pictures of things they've been doing at home. Keep them coming!



### Creative Arts Week 2012

Do have a look around the school at some of the amazing art work the children have produced during Creative Arts Week. It's brilliant!



### Happy last half term for Year 6

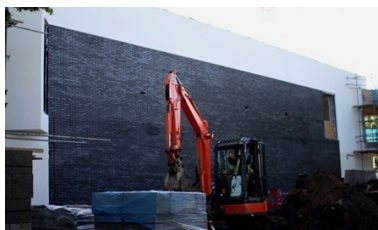
We wish all of Year 6 a very happy last term at Lowther before they graduate to secondary school. I know Mr Pritchard has lots of great things for them to do including the big trip to the Isle of Wight. Look out for their play towards the end of June—Bugsy Malone is a classic and I'm sure they'll produce a cracking show.

### School Lunches

We want school lunches to be awesome. The school council will be visiting another local primary school next week to write you all a review of what we can expect next year. We'd love children to have a healthy hot meal every day. Watch this space!

### Building Update

The building work is going well. They've caught up massively and are currently just 2 weeks behind schedule. The scaffolding has come down on the sports pitch side now and so hopefully you can really see how much space we'll have. I can assure you the quality of the new build will be first class. I can't wait!



### Changes to the Nursery and Reception outside area

We hope you like the changes we've made to the front of the school. We hoped to achieve 3 things

- To give the Nursery some much needed extra outside space
- To open up the Foundation Stage playground to give the children more play space ( we want to use all of our fantastic grounds)
- To make the front look more attractive

We're really pleased with the result—but hopefully not as happy as the Nursery children!



### The Olympics are coming to Richmond upon Thames

Richmond upon Thames will host six Olympic events this summer, including the torch relay and road cycling. All residents, particularly in Richmond, Twickenham, Teddington, Hampton Court, Hampton Wick and Kew, should be aware of the events including road closures and parking suspensions. There will be a series of briefing meetings for residents - see [http://www.richmond.gov.uk/resident\\_briefings\\_for\\_olympics.htm](http://www.richmond.gov.uk/resident_briefings_for_olympics.htm)

### More Easyfundraising!

We have just received another quarterly cheque from Easyfundraising for £158.78. It really does work and really is that easy to raise important funds for the school. Please sign up now [www.easyfundraising.org.uk/causes/lowthersch](http://www.easyfundraising.org.uk/causes/lowthersch) and make sure when you shop on the internet you click through [easyfundraising.org.uk](http://easyfundraising.org.uk).