



# Lowther School Family Newsletter

Issue 9

29th November 2011

[www.lowther.richmond.sch.uk](http://www.lowther.richmond.sch.uk)

## The Lowther Way

My last two Monday assemblies have been about the "Lowther Way. We've talked about what makes Lowther unique and special. What your children bring to the school every day with their enthusiasm, enjoyment of learning, willingness to go that extra mile all coupled with a smile on their face make Lowther buzz every day. Let's keep Lowther a special place to learn.

## Attendance, class of the week and behaviour target update from Mrs Colenso

### Attendance

Cool cats come to school! Our attendance target is 96%. Here are the latest figures for attendance by class for this half term.

Willow	94%
Oak	94%
Beech	97%
Pine	94%
Maple	97%
Elm	91%
Year 3	96%
Year 4	98%
Year 5	96%
Year 6	98%

Well done to ALL the classes in Key Stage 2 who have over 96%. Also Beech and Maple who are also beating the school target.

### The Lowther Family League

Each week we celebrate the best classes for attendance, the behaviour target and being 'class of the week'. Here's an update on the scores.

	Attendance	Gold	Class of the Week
Willow	1	2	
Oak	1	2	
Beech		6	1
Pine		7	3
Maple	1	6	1
Elm		6	3
Year 3	1	3	2
Year 4	3	8	2
Year 5	3	3	1
Year 6	3	4	1

Well done to Pine and Year 4 who are the kings and queens of the weekly behaviour target.

## Shopping — get involved and help the school!

We now have 66 supporters and **have raised £391.09 (wow!)** for the school. Sign up now and see if we can reach our target of 200 supporters. Don't forget to shop through **EASYFUNDRAISING** and help raise money for Lowther the easy way. Christmas is coming, shopping list at the ready, log on to easyfundraising and make present buying doubly rewarding. Wine from Laithewaites, toys from John Lewis, Argos, Toys R Us, homewares from Homebase - there are thousands of retailers who take part in the scheme. Thanks for your support. Visit the school website page <http://www.lowther.richmond.sch.uk/fundraising.php> for further details.

### Website updates

Steve our fab webmaster has put lots of new things on the class sections of the website—with lots more to follow soon. We hope you like it.

[www.lowther.richmond.sch.uk/classroom-links.php](http://www.lowther.richmond.sch.uk/classroom-links.php)

Also keep an eye out for Raouf from Year 6 updates on the building site—this will be the main way we keep you informed of the progress of the building alongside my usual bulletins in the newsletter.

### Uniform update — Boots!

Thank you for supporting us with the uniform policy. One area people have not picked up on is boots. Our policy (which is available online) clearly states "Boots can be worn to and from school but are not suitable to be worn all day. Children can bring another pair of shoes to change into."

This is a fairly common school uniform guideline. Thank you for your help with this.



## Christmas Fair

The school Christmas fair is this Friday — 2nd December 2011.

The fair starts at 3pm with the choir performing. The stalls will then open. The fair will run until 5pm.

There'll be all sorts of goodies available, some of which have been made by the children. It should be a festive and exciting afternoon. We look forward to seeing you there.



## Holiday days

Please do try to make sure you book any holidays for during school holiday time. All our term dates are on the website. It's important that children do not miss school days to go on a holiday which could be taken during normal holiday time. A VERY BIG well done to Year 3 who, year to date, have the lowest number of holiday days taken — absolutely fantastic!

## YOUR PTA

Maxine our PTA chair is looking to pass the baton on. She has been a wonderful leader of our PTA. It's an exciting time to get involved in the PTA with so many changes happening. Why not have an even bigger say in your school and get involved in the PTA?



### Message for Dads — 2 signed up more needed!

Thank you to the two dads signed up to help share their experiences of our engagement as a school with dads. We need another 4 to 8 volunteers please. All you would need to do is agree to answer a few brief questions with someone from the Fatherhood Institute; this would be done over the telephone at a time convenient to you and should not take more than 30 minutes. If you're happy to get involved, please fill out the slip below. All your

personal details will be kept confidential and your details will not be passed on to anyone else. Your views will really count.

Name:

Phone number:

Best time to call:

### Homework Challenges 2 and 3

The Science Fair was great on Monday. We had over 30 children doing various different experiments. Miss Treble, Mrs Taylor, Oliver's dad and I were all tremendously impressed with the HUGE effort children (and their parents) had put into designing and organising the experiments. Thanks for your wonderful support of the homework challenges. We'll put the full details on the website in the coming weeks. Well done to all our fantastic scientists.



We'll put the full details on the website in the coming weeks. Well done to all our fantastic scientists.



### Homework Challenge 2 Winners

We had a great time visiting the site. Jamie showed us around and we found out all about the building. It was cool!

### Strike information

As you are aware, trade union members have voted to take industrial action on **Wednesday 30 November 2011**. We do ask that you respect teacher's decisions as to whether they strike or not.

The classes closed are Willow, Beech, Pine, Elm and Year 6. All other classes are operating as normal.

### Children's Section

This section of the newsletter has been written and produced by Ella and Katie in Year 4. Great work girls!

Q	P	W	F	D	R	F	U	P
C	L	T	R	E	K	R	T	N
A	A	H	S	I	K	I	N	D
R	Y	Q	W	M	R	E	U	B
I	S	A	E	C	I	N	N	L
N	D	R	F	Z	J	D	O	S
G	T	I	U	L	P	S	I	A
L	U	F	P	L	E	H	G	C
F	G	U	T	F	T	I	Y	M
S	R	N	J	V	I	P	O	P
A	D	G	K	B	A	S	T	Y
R	E	F	G	U	H	J	Z	N

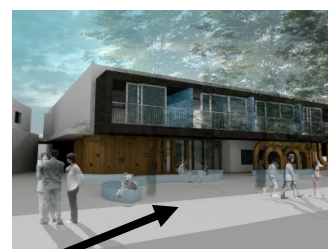
### EVENTS

written by your events girl Katie.

The new play coming up is the Nativity featuring children from Reception to Year two.

The new building will be ready in 10 months approximately. The new building will look like this.

Look out for the Christmas fair on the second of December in the afternoon.



### PUZZLES

Hello and welcome to the first ever puzzle section in the Lowther newsletter. I, Ella (Y4), am your puzzle girl and will try to challenge you with hard puzzles.

The theme for this puzzle is **FRIENDS**.

You will need to try and find:

FUN, HELPFUL, KIND, CARING, PLAYS and NICE.